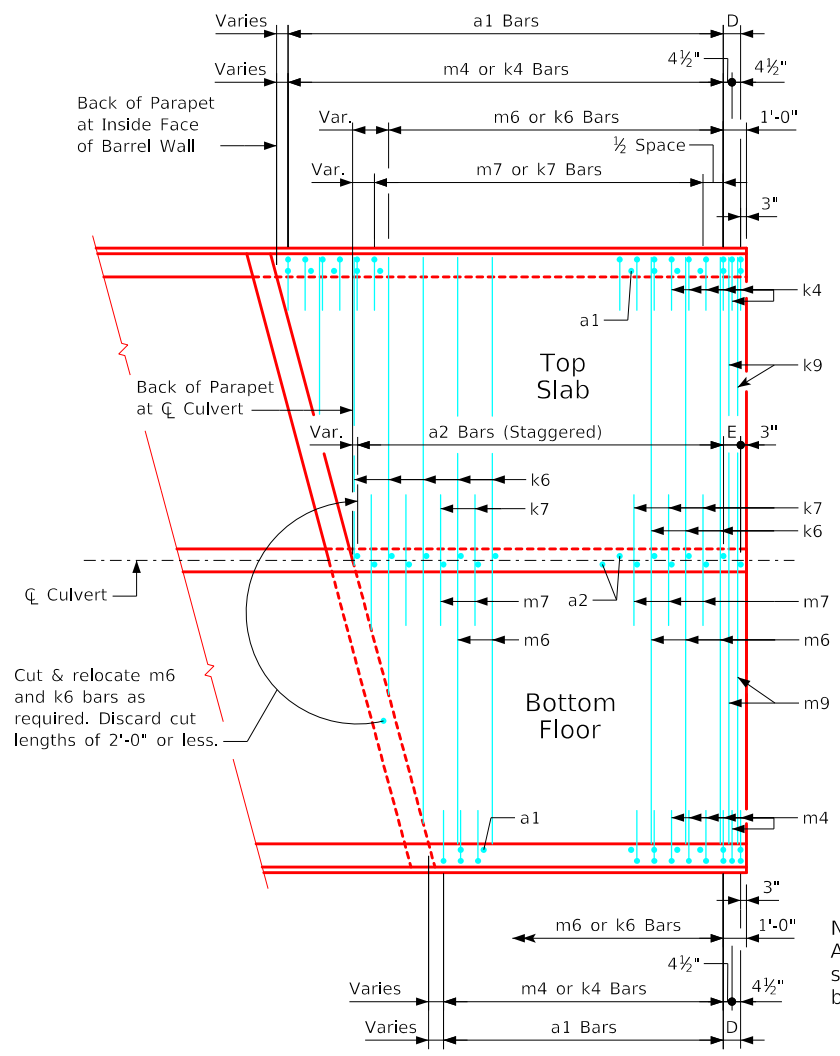


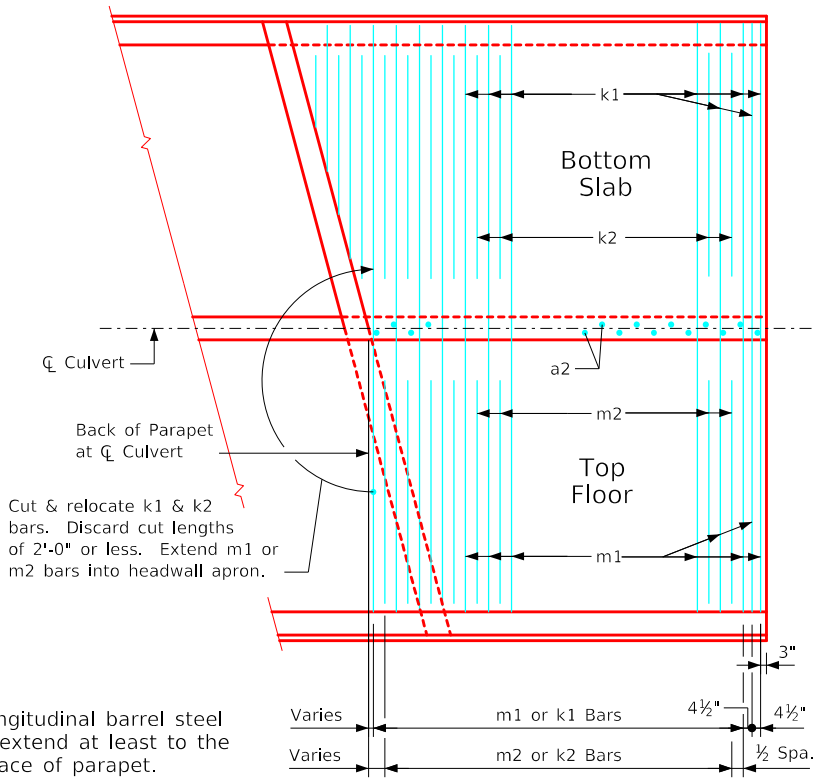
ENGLISHLRFDSTWNCULVERTS.DGN - TWRCB G3-20 - THIS SHEET ISSUED 07-2020.



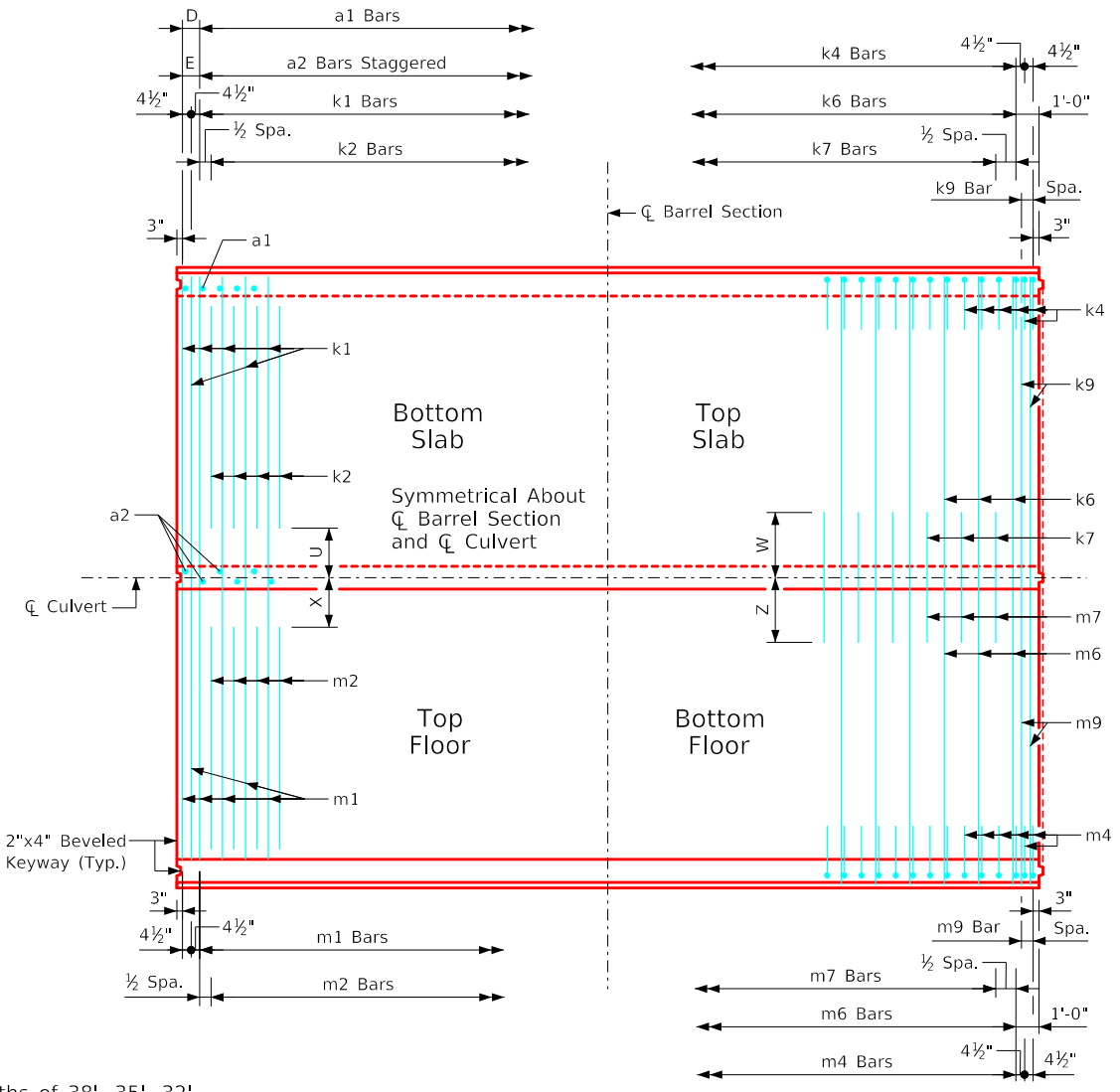
Note:  
All longitudinal barrel steel shall extend at least to the backface of parapet.

End Section Plan Views  
(Keyways not shown)

Note:  
End section details shown are for a 15° skew barrel. Use for skews of 30° & 45° by increasing the number of transverse reinforcing bars required to be cut and relocated.

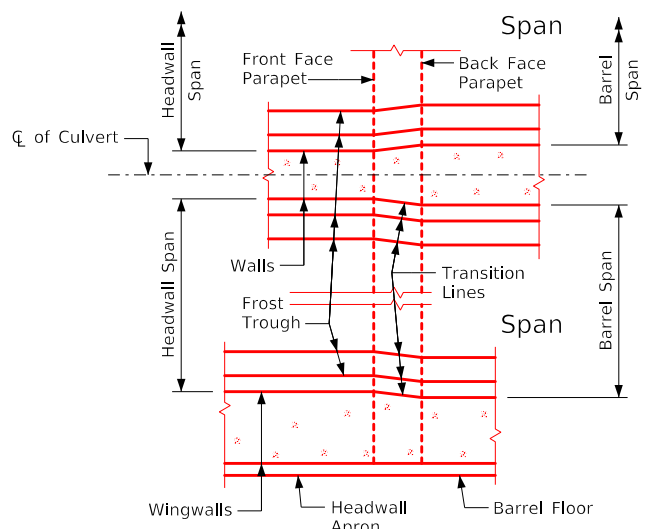


Note:  
Typical for lengths of 38', 35', 32', 29', and 26'. These lengths are shown as typical because all transverse and vertical reinforcing steel spacing repeats in 3'-0" intervals.



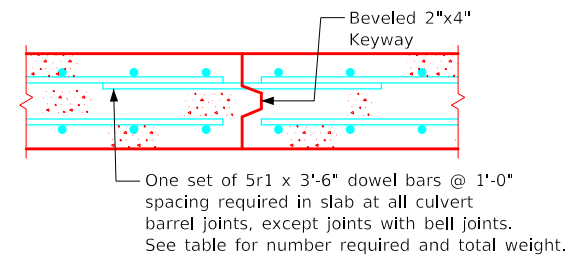
Standard Section Plan View  
(Keyway is to be omitted when bell joints are used)

Note:  
Dimensions listed on this sheet to be used in conjunction with dimensions and quantities for barrel section sheets.

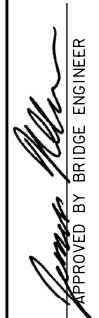



Transition Wall Details

5r1 Bars - One Const. Jt.			
Span	No.	Weight (LB)	
8'-0"	18	66	
10'-0"	22	80	
12'-0"	26	95	



Top Slab Construction Joint Detail

LATEST REVISION DATE	 APPROVED BY BRIDGE ENGINEER	 Standard Design Twin Reinforced Concrete Box Culverts July, 2020	
		Typical Culvert Barrel Details	
		TWRCB G3-20	